

APPEAL PROCEDURE

An appeal by the parent is the reconsideration of the results of any part of the identification process which would include

- Screening procedure or assessment instrument (which results in identification);
- The scheduling of children for assessment;
- The placement of a student in any program; and
- Receipt of services.

Parents should submit a letter to the superintendent or designee outlining the nature of the concern.

The superintendent or designee will convene a meeting with the parent/guardian, which may include other school personnel.

The superintendent or designee will issue a written final decision with 30 days of the appeal. This written notice should include the reason for the decision(s).

SERVICE

Reading - 4th, 5th, and 6th grade students identified in Reading and/or Language Arts are placed in an advanced reading class.

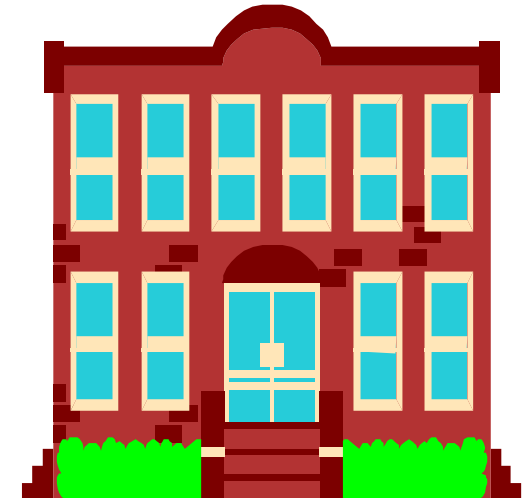
Math - 4th, 5th, and 6th grade students identified in Math are placed in an advanced math class.

Students who are identified in Reading or Math are served in the Resource Room.

If you have questions, please call your building principal or
Rick Charchol, Gifted Coordinator
at 419-422-7525 ext. 212

*DISTRICT POLICY
AND PLAN
FOR THE
IDENTIFICATION OF
CHILDREN WHO ARE
GIFTED*

Information for Parents



This pamphlet should be used with:

INFORMATION FOR PARENTS
Assessment Instruments used by the
District for Gifted Identification

and
IDENTIFICATION
OF CHILDREN
WHO ARE GIFTED

Excerpts from HB 282

SCREENING AND ASSESSING

The District uses a three-part approach to screen students who perform or show potential for performing at high levels of accomplishment in the areas of superior cognitive ability, specific academic ability, creativity, and visual and/or performing arts.

Stage I:

PRE-ASSESSMENT

The pre-assessment part of the process involves gathering student data from a variety of sources including teacher, parent, and peer nominations, grades, portfolios, observations, review of student records, and outstanding products or performances, etc. Parent referral forms are available by contacting the Hancock County ESC gifted coordinator at 419-422-7525. All students are involved in the pre-assessment pool.

By using the pre-assessment process, the district ensures equal access to screening and further assessment by all district children, including culturally or linguistically diverse children, children from low socioeconomic backgrounds, children with disabilities, and children for whom English is a second language.

Stage II:

ASSESSMENT FOR SCREENING

The screening stage examines the data gathered from the pre-assessment stage and determines if additional assessment is necessary.

In making decisions about additional assessment, existing test data for students is not the sole determining criteria. School personnel examine all available information about a student to determine if an evidence of possible

giftedness exists for that student and conduct necessary additional assessment.

District-determined cut-off scores, to move students from screening stage to the assessment stage, are lower than the scores necessary for identification. Parents are notified within thirty days of the results of screening.

Stage III:

ASSESSMENT FOR IDENTIFICATION

Assessment strategies provide additional data necessary for an identification decision and the delivery of services. Strategies for additional assessment include the individual and group testing requirements of Sections 3324.01-3324.07 of the Ohio Revised Code; and as described in the Gifted Identification pamphlet.

Once additional assessment has been completed, the data obtained throughout the stages of identification are evaluated, the identification decision is made and student's educational needs are determined.

In the case of students who have requested assessment or who have been recommended for assessment by teachers, parents, community members or other students, the district provides at least two opportunities a year for assessment in all grade levels, k-12.

REQUIREMENT

The district selects instruments, from the approved list, that allow for appropriate screening and identification of minority or disadvantaged children, children with disabilities and children from whom English is a second language.

Tests are selected and administered so as to best ensure that when a test is administered to a child with impaired sensory, manual or speaking skills the test results accurately reflect the child's aptitude or achievement level or whatever other factors the test purports to measure, rather than reflecting the child's impaired sensory, manual or speaking skills except where those skills are factors which the test purports to measure.

The gifted intervention specialist and gifted coordinator, who administer tests, hold an intervention specialist license, valid for teaching gifted students ages five through twenty-one.

REFERRAL

Upon receipt of a referral, the district

- Follows the process as outlined in this brochure; and
- Notifies parents of results of screening or assessment and identification.

GENERAL

The district accepts scores on assessment instruments approved for use by the Ohio Department of Education provided by other school districts and/or trained personnel outside the school district.

TRANSFER

The district ensures that any child transferring into the district will be assessed within 90 days of the transfer at the request of the parent. Parents should contact the building principal.

